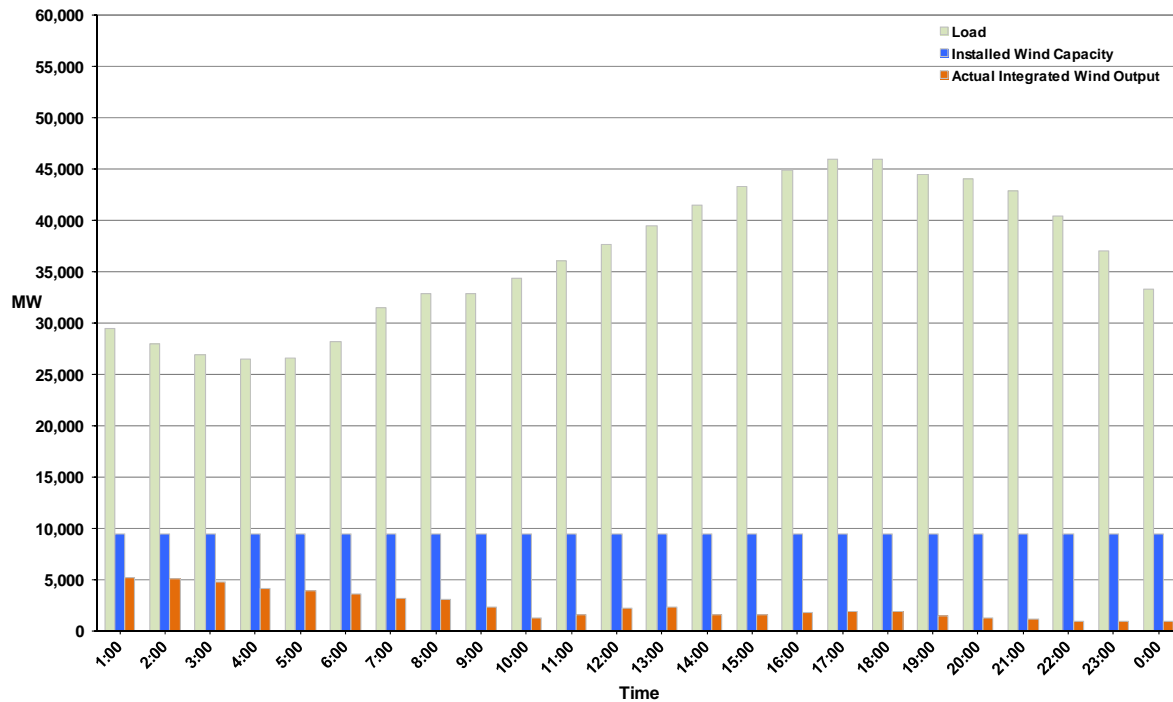




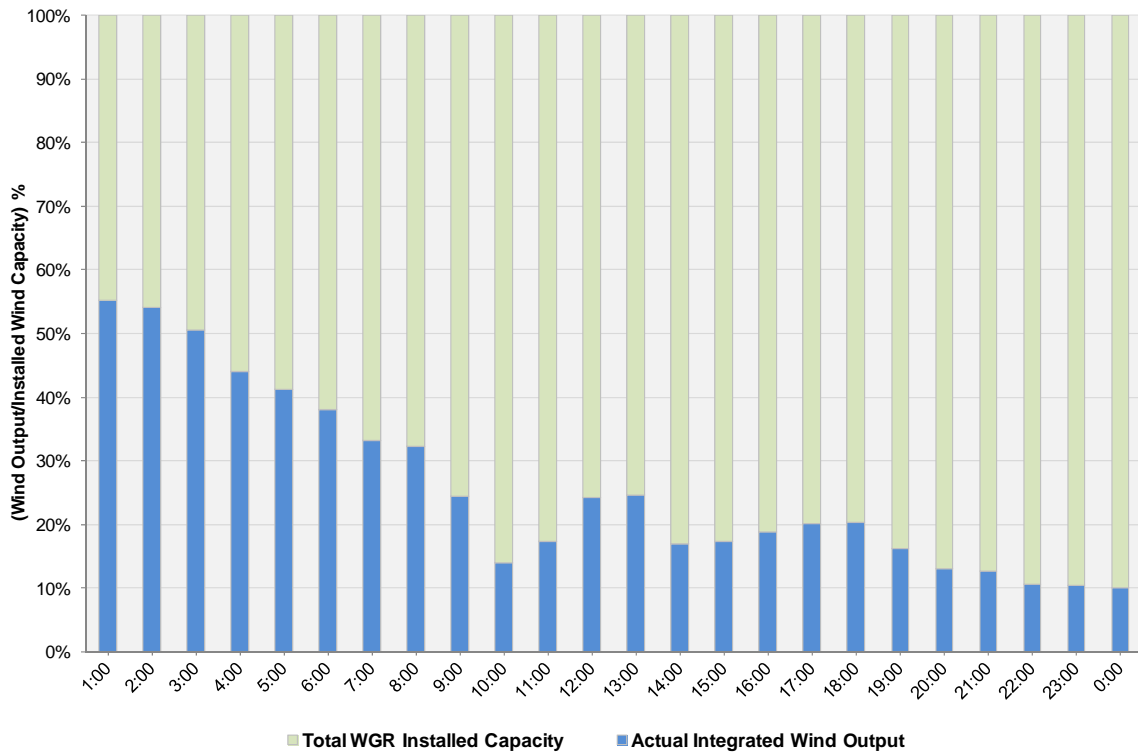
ERCOT Grid Operations Wind Integration Report: 10/12/11

Peak Load	46,017 MW
Load Peak Hour	17
Wind over Peak	1,901 MW
Wind Record 10/07/11	7,400 MW
Max Wind Value	5,285 MW
Wind Peak Time	00:34
Wind Integration %	18.03%

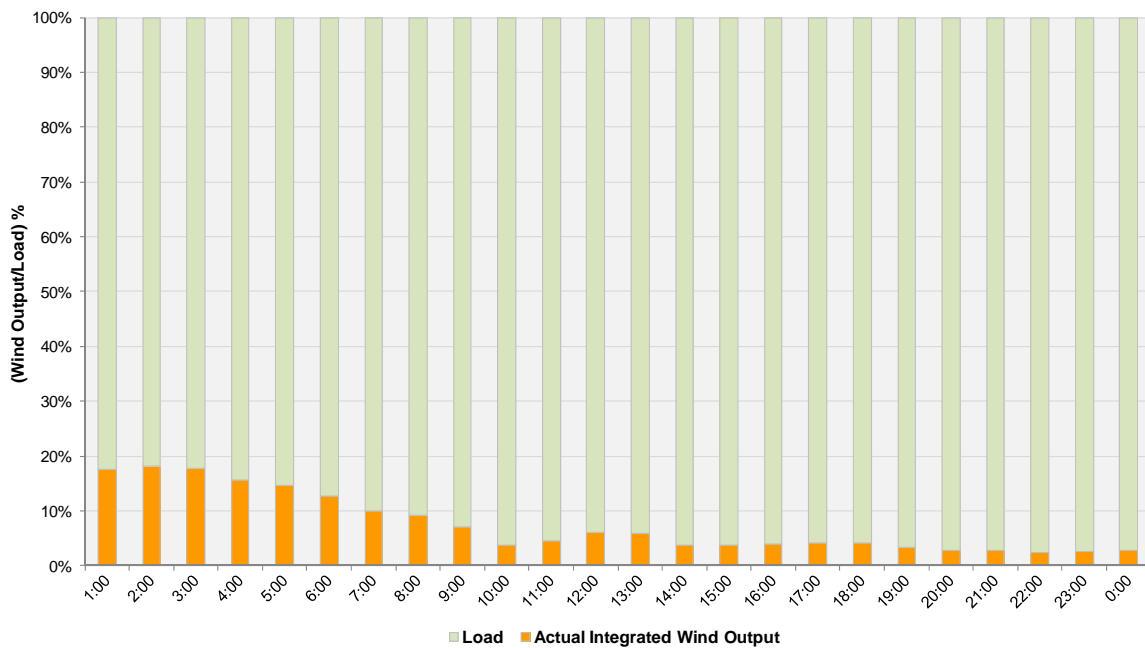
**Hourly Average Actual Load vs. Actual Wind Output
10-12-2011**



Actual Wind Output as a Percentage of the Total Installed Wind Capacity
10-12-2011



Actual Wind Output as a Percentage of the ERCOT Load
10-12-2011



ERCOT Load vs. Actual Wind Output 10/5/2011 - 10/12/2011

